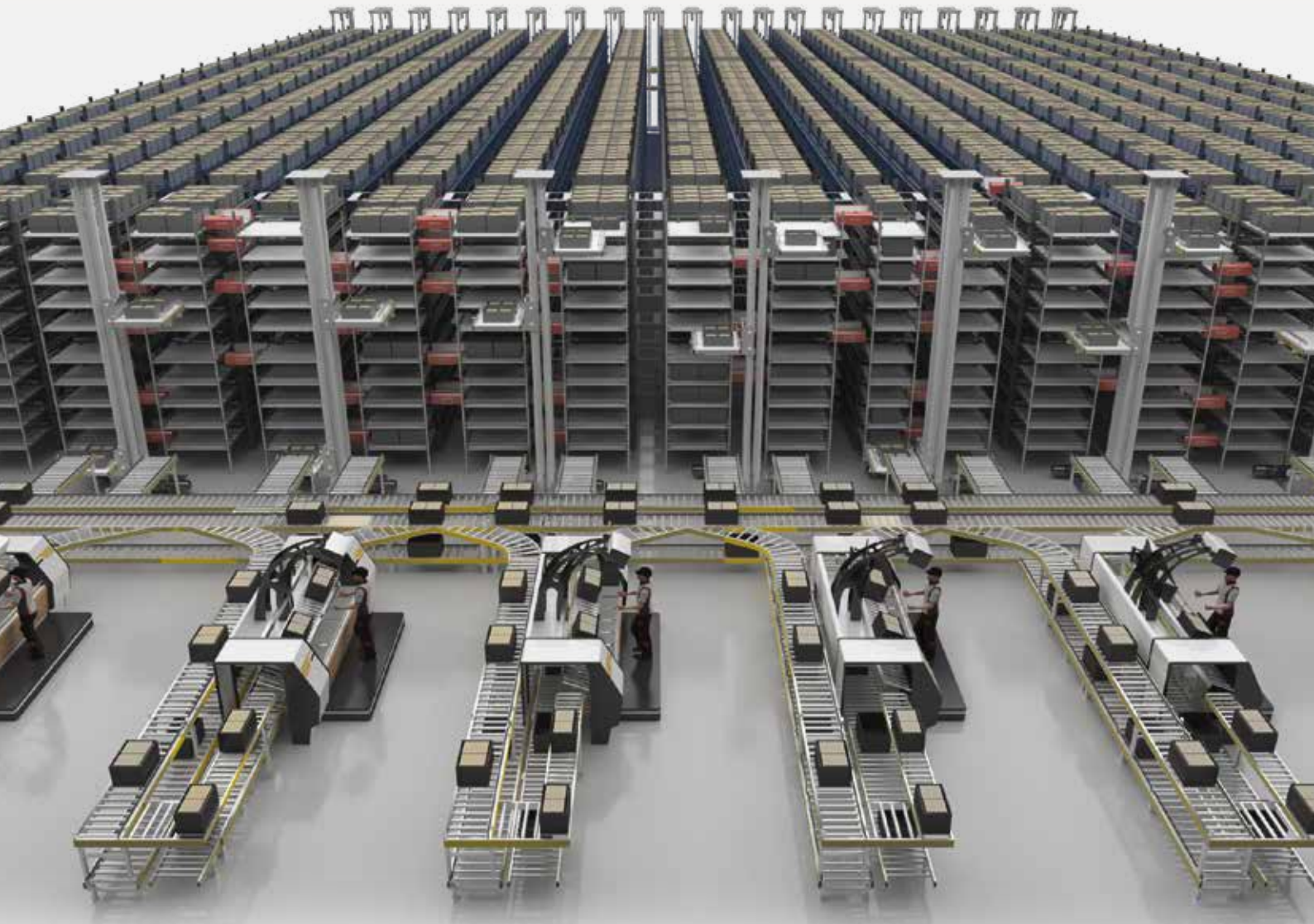


Full-Roaming Tote Shuttle System

GALAXIS

— 02729.HK —

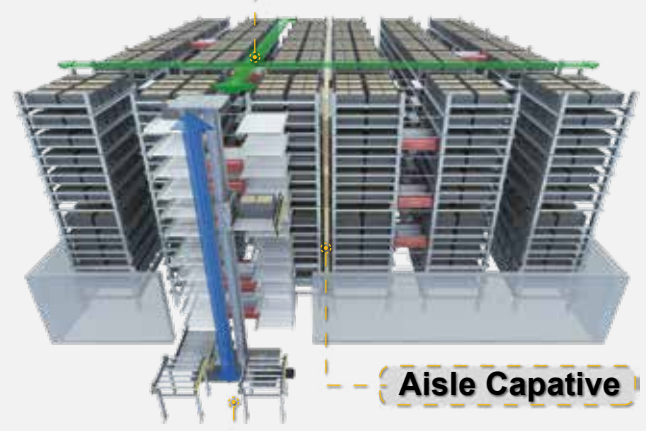
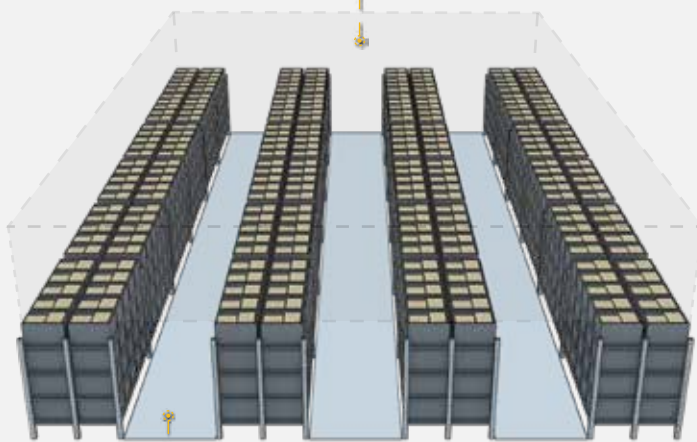


Manual Picking

Goods-to-person Picking with MSR System

Unutilized space

Better space utilization



Picking aisle

Aisle Capative

Level switching

ZHEJIANG GALAXIS TECHNOLOGY GROUP CO.,LTD.
No.1118, Chicheng Road, DaqiaoTown,Nanhu District, Jiaxing City, Zhejiang Province, China

T: 400-101-0947
E: info@galaxis-tech.com
w: www.galaxis-tech.com



Specification

Specification	FLASH 6040	FLASH 8060
External dimensions	744 × 930 × 338 mm	894 × 1,147 × 338 mm
Weight of Shuttle	90 kg	100 kg
Max Aislewise Speed w/o loading	5 m/s	5 m/s
Max Aislewise Speed loaded	4 m/s	4 m/s
Max Crosswise Speed	2 m/s	2 m/s
Max Aislewise Acceleration	2 m/s ²	2 m/s ²
Max. Payload	50 kg	50 kg
Type of Load Handling Device	Single\ Double Deep Storage\ Customized	Single\ Double Deep Storage\ Customized
Controller	GALAXIS PC ARM / SIEMENS PLC	GALAXIS PC ARM / SIEMENS PLC
Positioning Method	Encoder + Sensor	Encoder + Sensor
Positioning Accuracy	±1 mm	±1 mm
Type of LHD	STD	STD
Max. HU Dimension (Standard)	600(Length) × 400(Width)mm	800(Length) × 600(Width)mm
Min. HU Dimension	290(Length) × 300(Width)mm	290(Length) × 300(Width)mm
Min. HU Height	140 mm	140 mm
Min. Rack Level Pitch (HU height ≤ 225mm)	375 mm	375 mm
Min. Rack Level Pitch (HU height > 225mm)	150mm+HU height	150mm+HU height
Communication	Wi-Fi or 5G	Wi-Fi or 5G
Power Supply	Super Capacitor + Li-ion battery	Super Capacitor + Li-ion battery
Charging Voltage	48 V	48 V
Humidity	45 % ~ 95 % non-condensing	45 % ~ 95 % non-condensing
Ambient Temperature Range	-18 °C ~ 40 °C -0.4 °F ~ 104 °F	-18 °C ~ 40 °C -0.4 °F ~ 104 °F

✕ Products can be customized in size. Please contact our sales team for details.